

# Frontline® X240

## Wireless Wideband Analyzer



### Key Features and Benefits

- Flexible configuration options available
- Captures the technologies you need. (Bluetooth BR/EDR, Low Energy, 802.11 a/b/g/n and ac 3x3 MIMO and 802.15.4)
- Small footprint, USB bus powered and car adapter (included) for exceptional mobility
- Faster root cause analysis of audio issues with the integrated Bluetooth Audio Expert System
- Manual and automatic gain controls for easy adaptations to every environment
- Live or post-capture decryption and analysis
- All Bluetooth profiles and protocols supported through the latest specification
- Excursion Mode allows for one-button PC-free captures
- Spectrum analysis helps identify potential RF conflicts
- Support for latest mesh technology
- Wired capture via two highly user-configurable 8-channel HCI UART/Logic Pods
- Capture and decode HCI SPI, UART (H4, H5, BCSP, and WCI-2)
- 16 channel logic analyzer

Teledyne LeCroy's Frontline X240 Wireless Wideband Analyzer, featuring flexible technology-based licensing and exceptional portability, brings 2.4GHz and 5GHz ISM bands analysis to every lab and every environment efficiently and affordably. Coupled with Teledyne LeCroy's Wireless Protocol Suite software's streamlined UI and superior decoding engine, the X240 is equipped to decode Bluetooth® BR/EDR and Low Energy, 802.11, and 802.15.4 traffic for more rapid, robust, and cost-effective wireless development, testing and troubleshooting.

With the Frontline X240 Wireless Wideband Analyzer, Teledyne LeCroy takes wireless protocol analysis to the next level for the maximum value. With Bluetooth audio analysis, spectrum analysis, Excursion Mode for PC-free captures, up to 16 logic channels, and powered by USB, the Frontline X240 makes it possible to capture and decode the wireless technology you're developing or troubleshooting in even the most challenging settings.

### The Right Tool for the Job

With the Frontline X240, a new a la carte licensing model allows the user to create the right tool for every job. Equip the X240 with any single technology (Bluetooth BR/EDR, Bluetooth LE, 802.11 a/b/g/n and ac, or 802.15.4) or any combination of those technologies for a tool that's no less than exactly what you need, and no more than you need to buy. CrossSync™ functionality allows you to connect multiple X240 units together to capture multiple technologies simultaneously, and facilitates antenna diversity.



### Maximum Mobility

Since wireless applications are ubiquitous, the need for mobility during testing is essential. The Frontline X240 was designed with this need in mind. Teledyne LeCroy has packed maximum capturing power in a package that's only a little bigger than a paperback novel.

But portability is about more than just size. The Frontline X240 comes equipped with a car adapter for mobile automotive applications, and can be powered by USB when AC power is hard to come by. And when true mobility is called for, Excursion Mode will allow the user to capture everything in the air at the push of a button, without any PC attached.

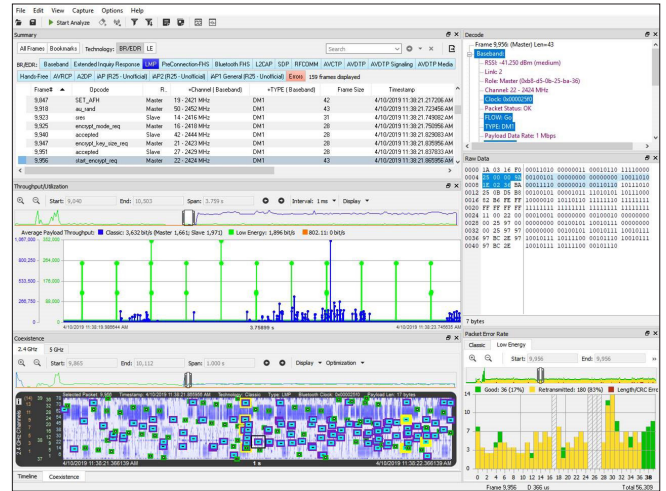
## Specifications

- Power**  
 USB Type C connector  
 USB Wall Adapter with Power Delivery  
 USB Car Adapter with Power Delivery  
 Power over Ethernet
- Dimensions and Weight**  
 7.5" wide X 4" deep X 1" tall  
 190.5 mm X 101.6 mm X 25.4 mm  
 1.5 lbs
- Bus Type**  
 USB Type C  
 Ethernet (10, 100, 1000 Mbps)
- Operating Frequency of SDR used for Bluetooth and 802.15.4**  
 2395MHz - 2485MHz
- Operating Frequency of WiFi Module**  
 802.11 b/g/n 2.4GHz  
 802.11 a/n/ac 5GHz
- Sensitivity Range**  
 -90dBm to +10 dBm
- Supported Demodulators**  
 BR/EDR and LE (GFSK,  $\pi/4$  DQPSK, 8DPSK)  
 802.15.4 (O-QPSK)
- Logic Analyzer Timestamp Resolution**  
 5ns
- Operating Temperature**  
 0° to +40°C (32° to 104°F)
- Humidity**  
 Operating: 10% to 90% RH  
 (noncondensing)
- Regulatory Compliance**  
 FCC part 15 B      ARIB T-66  
 IEC60950          PSE  
 NRTL                EMC  
 CE                    WPC
- OS Supported**  
 Windows 10, 11
- USB Port**  
 USB 2.0, USB 3.0

## Streamlined User Interface

The Wireless Protocol Suite combines all the power and maturity of Frontline's protocol analysis software with a fresh new interface that brings all analysis tools into a single docking framework window which you can customize to your own preferred way of working.

It's all there; message sequence charts, packet error rate statistics, throughput graphs, timelines, and all of the other windows into these complex technologies are now available as dockable windows, and are supported by the mature and robust decodes that come from the decades of experience in wireless protocol analysis embodied by Teledyne LeCroy's Frontline brand of protocol analyzers. The software can also work with other Teledyne LeCroy protocol analysis tools for unparalleled cross-protocol debugging.



The Frontline X240 Wireless Wideband Analyzer delivers all the bells and whistles of a world class wireless protocol analyzer that's perfectly tailored to your specific debugging environment; perfect for your needs and your budget.

## PREMIUM MAINTENANCE - Frontline X240

Premium Maintenance for Frontline X240 Wireless Wideband Analyzer ensures that your product is up to date with the latest software updates and features. Your Frontline X240 product comes with one year of Premium Maintenance and includes:

- Updates addressing changes to the core Bluetooth® Specification
- New software features
- New decodes
- Product bug fixes

## Ordering Information

### Product Description

Frontline X240 System Hardware  
 HCI UART/Logic 8 Channel Pod  
 CrossSync Cable Kit

Bluetooth LE Software License  
 BR/EDR Software License  
 802.11 a/b/g/n and ac Software License  
 802.15.4 Software License

Spectrum Analysis License  
 Excursion Mode License

### Product Code

2014-26000-000  
 2300-00036-000  
 2300-00037-000  
  
 2013-22260-001  
 2013-22260-002  
 2013-22260-003  
 2013-22260-004  
  
 2013-22260-005  
 2013-22260-006



## 绿测科技有限公司

广州总部：广州市番禺区陈边村金欧大道83号江潮创意园A栋208室  
 深圳分公司：深圳市龙华区龙华街道 油松社区东环一路1号耀丰通工业园1-2栋2栋607  
 南宁分公司：广西自由贸易试验区南宁片区五象大道401号五象航洋城1号楼3519号  
 广州分公司：广州市南沙区凤凰大道89号中国铁建·凤凰广场B栋1201房  
 电话：020-2204 2442  
 传真：020-8067 2851  
 邮箱：Sales@greentest.com.cn  
 官网：www.greentest.com.cn



微信视频号



绿测科技订阅号



绿测工场服务号